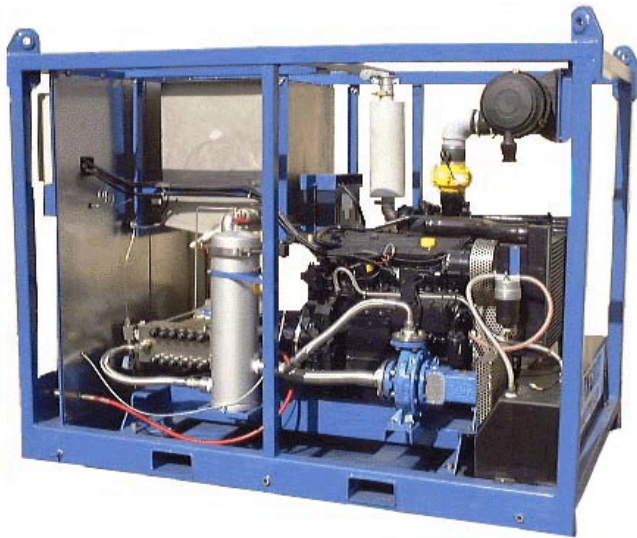


AQUA ENERGY

**Skid Mounted
High & Ultra High Pressure Water Jetting Units
for Oil-Refineries & Offshore Oil Platforms**
Conforming to Lloyds Open Deck Zone 11 Areas, OCMA MEC 1;
BS5908 Zones 1 & 11; BP 200; Shell ISO 27;
EEMUA No 107 (1992), ATEX 1834-1-2000 Specifications

Model: DS-380-CF



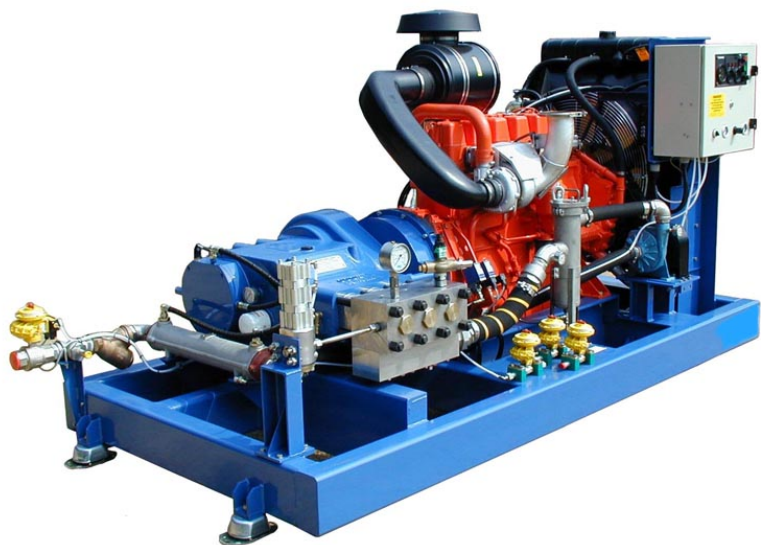
PERFORMANCE

2,800 bar @ 28.50 l/min
2,500 bar @ 43.00 l/min
2,000 bar @ 65.00 l/min
1,600 bar @ 85.00 l/min
1,200 bar @ 113.00 l/min
1,000 bar @ 135.00 l/min
800 bar @ 179.00 l/min
630 bar @ 227.00 l/min
500 bar @ 283.00 l/min

Model: DS-480-BS

PERFORMANCE

2,800 bar @ 33.50 l/m
2,500 bar @ 53.00 l/m
2,000 bar @ 79.00 l/m
1,600 bar @ 106.00 l/m
1,200 bar @ 124.00 l/m
1,000 bar @ 167.00 l/m
800 bar @ 211.00 l/m
650 bar @ 266.00 l/m



Aqua Energy International Limited, St James Business Centre, Linwood Road,
Paisley PA3 3AT, Scotland, UK

Tel: (+44) (0) 141 849 6888 Fax: (+44) (0) 141 848 5777

E-mail: info@aquaenergy.com www.aquaenergy.com

DS-380-CF & DS-480-BS

Standard Features

Pump- DS-380/480 horizontal triplex positive displacement pump, rated up to 480 HP service. Plunger pump consists of stainless steel fluid cylinders, solid ceramic plungers, stainless steel valves and seats with chevron packing. The plungers and packing are water lubricated. The power end of the DS-380/480 series pump is positive splash oil lubricated with sight glass for oil level check. Crankshaft is made of high strength alloy steel. Main bearing is roller.

Suction Plumbing- Water filter 5 micron capacity protects pump. 50 to 200 gallon water storage tank with ball cock and float.

Discharge Plumbing- Discharge manifold with interchangeable high pressure discharge connections for pressure gauge, relief valve, rupture disc and hose couplings. Stainless steel glycerine filled pressure gauge, stainless steel snubber assembly, Rupture disc or relief valve.

Unit Mounting- Mounted on a steel channel frame with pump base and anti-vibration mountings. Steel plate top deck and offshore crash frame.

Power Transmission- Direct Drive via a reduction gearbox or belt drive.

Finish System- Units are zinc primed and have one coat of industrial blue (or choice of colour) enamel. Coatings for offshore corrosive atmospheres are available.

Optional Accessories:

Dump-Gun Hand or foot dump control type with safety shroud, whip hose and coupling.

Hoses- High Pressure for use at pressures up to 40,000 psi.

Lances- Rigid and flexible variety SAE, JIC, pipe and welded end connections.

Nozzles- Wide assortment for surface and tube cleaning.

Rotary- Surface Preparation Jet for coatings removal and descaling

Regulator- Variable flow and pressure adjustment. Controlled by hand or mechanical actuation.

Auto-Throttle- Variable engine speed adjustments with automatic return to idle when Aqua-Gun is depressurised.

Vacuum- Uses the Jet-Blaster pump to create a vacuum for sludge and slurry transport.

Line Mole- Pipe and sewer cleaning type with replaceable fan and round jet inserts.

Abrasive Injector- Aqua-Saw abrasive injector mixes abrasive into Aqua-Gun discharge stream.

Deck Cleaner- Rotary jet driven multi-nozzle floor and grate cleaning system with hand operated controls.

Couplings- Rated at up to 40,000-psi (2,758 bar) working pressure. Optional snap type for use to 10,000 psi.

For further information contact: Aqua Energy International Limited
St James Business Centre
Linwood Road,
Paisley PA3 3AT, Scotland UK
Tel: (+44) (0) 141 849 6888
Fax: (+44) (0) 141 848 5777
E-mail: info@aquaenergy.com
www.aquaenergy.com