

# **AQUA ENERGY RL** HIGH PRESSURE

**AQUA ENERGY INTERNATIONAL LTD**

**INDUSTRIAL PLUNGER PUMP**

8 St James Business Centre  
Linwood Road, Paisley PA3 3AT  
Scotland, UK

Tel: (+44) (0) 141 849 6888

Fax: (+44) (0) 141 848 5777

E-mail: [info@aquaenergy.com](mailto:info@aquaenergy.com)

<http://www.aquaenergy.com>



## **PUMP SPECIFICATIONS**

**Rated Horsepower** -----25  
**Number of cylinders** -----3  
**Plunger Stroke** -----mm40

**Oil Capacity** -----lt 3.8  
**Plunger Load** ----- 1,370 Kg  
**Pump Weight** ----- -Kg 65

### **FLUID END**

### **POWER END**

**FLUID HEAD** - Chemical nickel treated spheroidal cast iron.

**POWER FRAME** - High strength cast iron.

**VALVES & SEATS** – Vertical fitted valves made in stainless steel and Bronze spacers.

**CRANKSHAFT** - Hardened and tempered alloy steel.

**PLUNGERS** - Stainless Steel with ceramic coating.

**CRANKSHAFT BEARINGS** - Double roller rim.

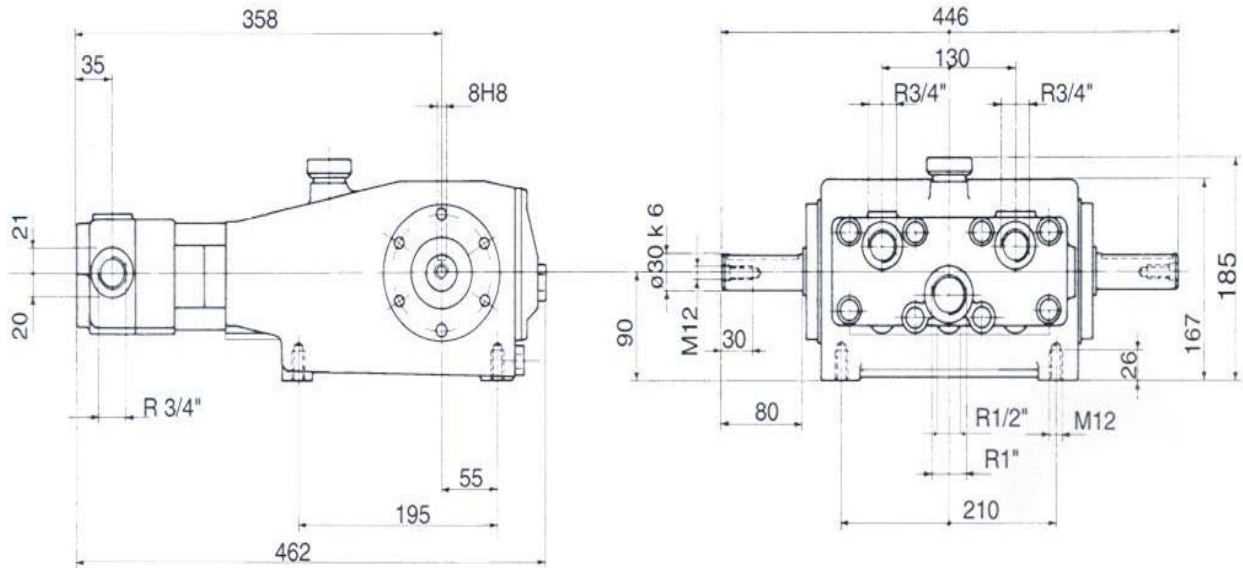
**PACKING** – Double Pressure Packing giving long service.

**CONNECTING RODS** - Surface treated spheroidal cast Iron.

**LUBRICATION** - Plungers and Packing lubricated by water supply with water spill venting.

**LUBRICATION** – Power end parts and gearbox are splash lubricated by oil in crankshaft reservoir.

# RL SERIES TRIPLEX



## RL PUMP:

Maximum design pressure 300bar (4,350psi)

Maximum inlet pressure 3 bar (45psi)

Crankshaft with choice of projection

**Standard connections:** Suction ----- G 1"

Discharge -----G 1/2"

## Table of pump versions

Model	RPM	Volume		Pressure		Power	
		L/min	Gpm	Bar	Psi	Kw	Hp
RL 18	1000	30.0	7.9	300	4350	18.6	25.0
RL 20	1000	37.0	9.8	250	3600	18.6	25.0
RL 22	1000	45.0	11.9	210	3050	18.6	25.0
RL 25	1000	59.0	15.6	160	2300	18.6	25.0
RL 30	750	62.0	16.3	150	2150	18.6	25.0

Performances refer to theoretical delivery with 100% volumetric efficiency.

Under normal operating conditions pump volumetric efficiency is over 95%.

Please contact our technical staff in case of continuous and heavy-duty or special applications.

Special versions with stainless steel head and manifold are available for pumping seawater, brackish water or other processing or aggressive liquids.

These special versions can be used for continuous duty and are specially designed for reverse osmosis, treatment, transfer, lifting and super-filtration plants and sea-water blasting.

# AQUA ENERGY